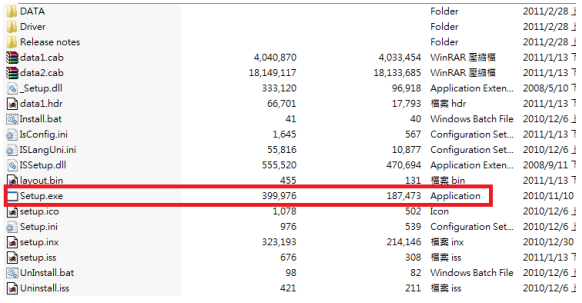
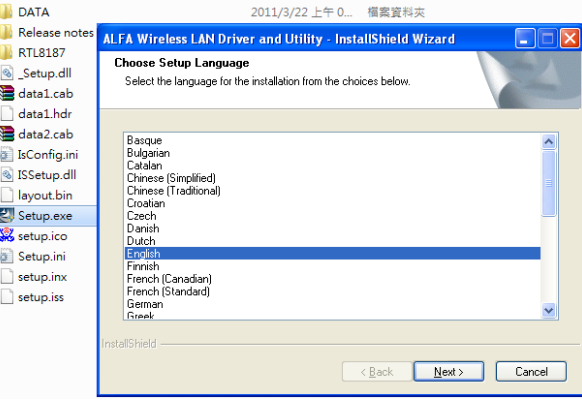
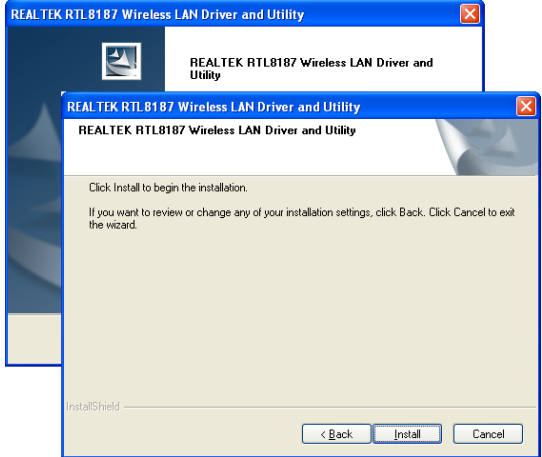


Quick Installation Guide for AWUS036H

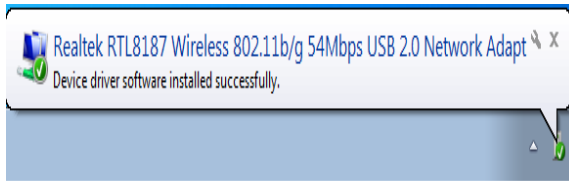
<p>www.alfa.com.tw/in/front/bin/ptlist.phtml?Category=105397</p> <p>Instruction vid for Driver installation on windows vista/windows 7</p> <table border="1"> <thead> <tr> <th></th> <th>Windows 98/2000/XP</th> <th>Windows Vista</th> <th>Windows 7</th> <th>Linux</th> <th>Mac OS</th> </tr> </thead> <tbody> <tr> <td rowspan="3">AWUS036H</td> <td>Normal</td> <td>Normal</td> <td>Normal</td> <td>Linux(2009)</td> <td>MacOS 10.4</td> </tr> <tr> <td></td> <td></td> <td></td> <td>Linux(2010.1.29)</td> <td>MacOS 10.5</td> </tr> <tr> <td>Power Control Driver</td> <td>Power Control Driver</td> <td>Power Control Driver</td> <td>Linux Kernel (2.6.x)</td> <td>MacOS 10.6</td> </tr> </tbody> </table>		Windows 98/2000/XP	Windows Vista	Windows 7	Linux	Mac OS	AWUS036H	Normal	Normal	Normal	Linux(2009)	MacOS 10.4				Linux(2010.1.29)	MacOS 10.5	Power Control Driver	Power Control Driver	Power Control Driver	Linux Kernel (2.6.x)	MacOS 10.6	<p>Open your browser and enter following URL to enter our download section,</p> <p>http://www.alfa.com.tw/in/front/bin/ptlist.phtml?Category=105397</p> <p>Select a driver that fits to your operating system.</p>
	Windows 98/2000/XP	Windows Vista	Windows 7	Linux	Mac OS																		
AWUS036H	Normal	Normal	Normal	Linux(2009)	MacOS 10.4																		
				Linux(2010.1.29)	MacOS 10.5																		
	Power Control Driver	Power Control Driver	Power Control Driver	Linux Kernel (2.6.x)	MacOS 10.6																		
	<p>After file is downloaded, unzip to a folder then execute setup.exe file to bring up installation wizard.</p>																						
	<p>Unzip the download file and execute "setup.exe." Select your setup language and click "Next" to start installation wizard.</p>																						
	<p>On the "Wireless LAN Driver and Utility" click "Install" to continue.</p>																						



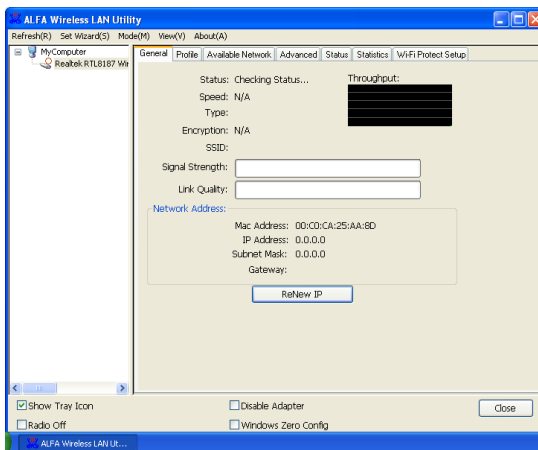
Click **“Finish”** and the Utility will pop up for Windows XP. (Choose **“No, I will restart my computer later”** and click **“Finish”** for Windows Vista)



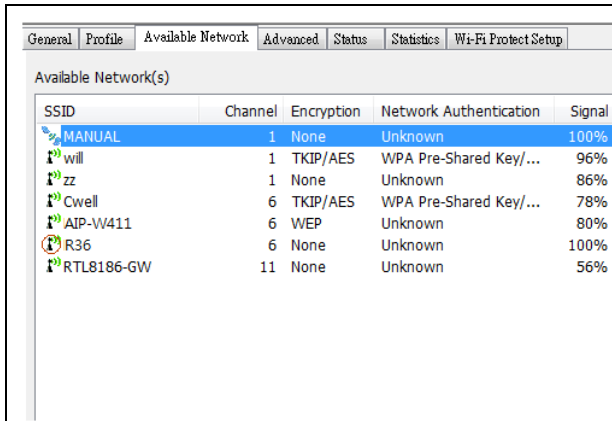
Attach the antenna to the wireless adapter and plug in the USB cable to AWUS036H. Insert the USB connector into an available USB port, your computer will then detect and activate the adapter automatically. Do Not remove the CD from the computer



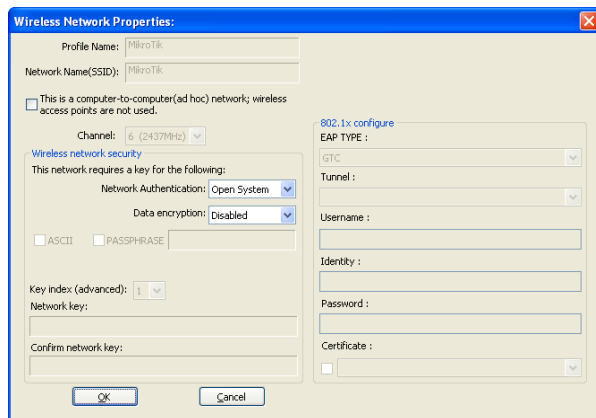
Found New Hardware pops up from the utility bar



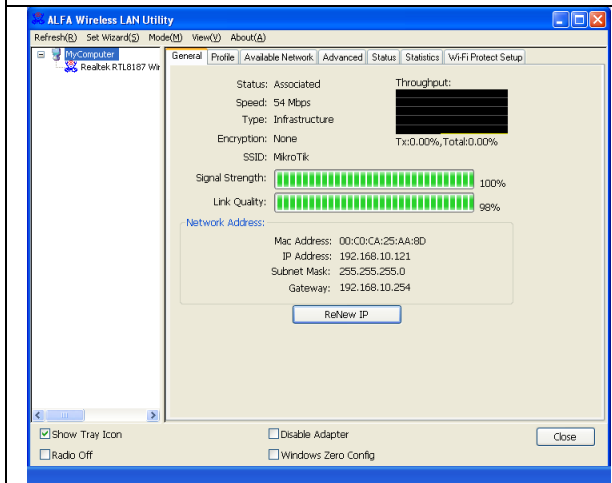
Double click on the **“Alfa Wireless LAN Utility”** icon placed on your desktop from the installation program.



Select “**Available Network**” and double click on your target network



Input the network security key and click “**OK**” if the network has security key protected.



Now, it should bring you back to General page where you can see “**Signal strength**” and “**Link Quality**” of your wireless connection. Click “**Close**” to hide the utility.